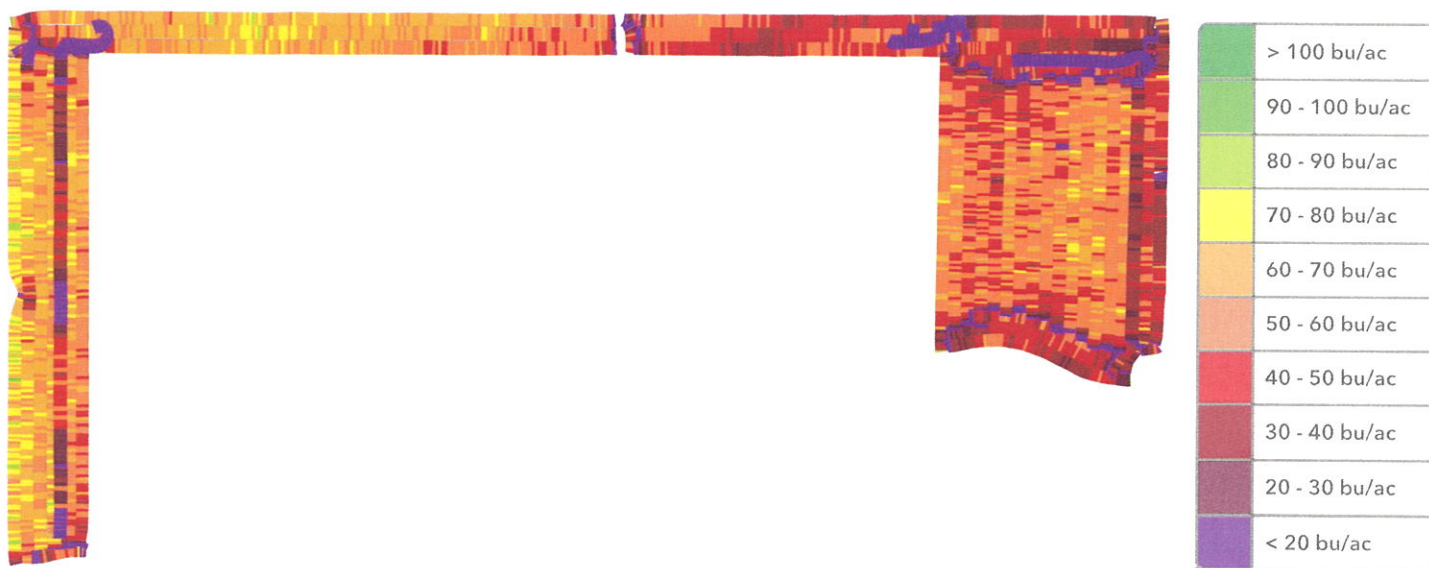


## North buffer

Kevin | Taylor

Soybeans - Harvested 10/4/15 - 10/6/15



VARIETY	AVG YIELD (BU/AC)	MOISTURE	HARVESTED ACRES
<span style="color: blue;">●</span> NK S25-L9	54.2	13.1%	11.5
<span style="color: orange;">●</span> S25-E5	50.5	11.9%	7.1
<b>Total/Avg</b>	<b>52.8</b>	<b>12.7%</b>	<b>18.7</b>

COMBINE	OPERATOR	WET WEIGHT (LBS)	MOISTURE	ACRES
<span style="color: orange;">●</span> Gleaner R62 (1995+) (8000001)	--	59,104	12.7%	18.7
<b>Total/Avg</b>		<b>59,104</b>	<b>12.7%</b>	<b>18.7</b>

**18.7**  
HARVESTED ACRES

**52.8**  
AVG YIELD (BU/AC)

**12.7%**  
MOISTURE

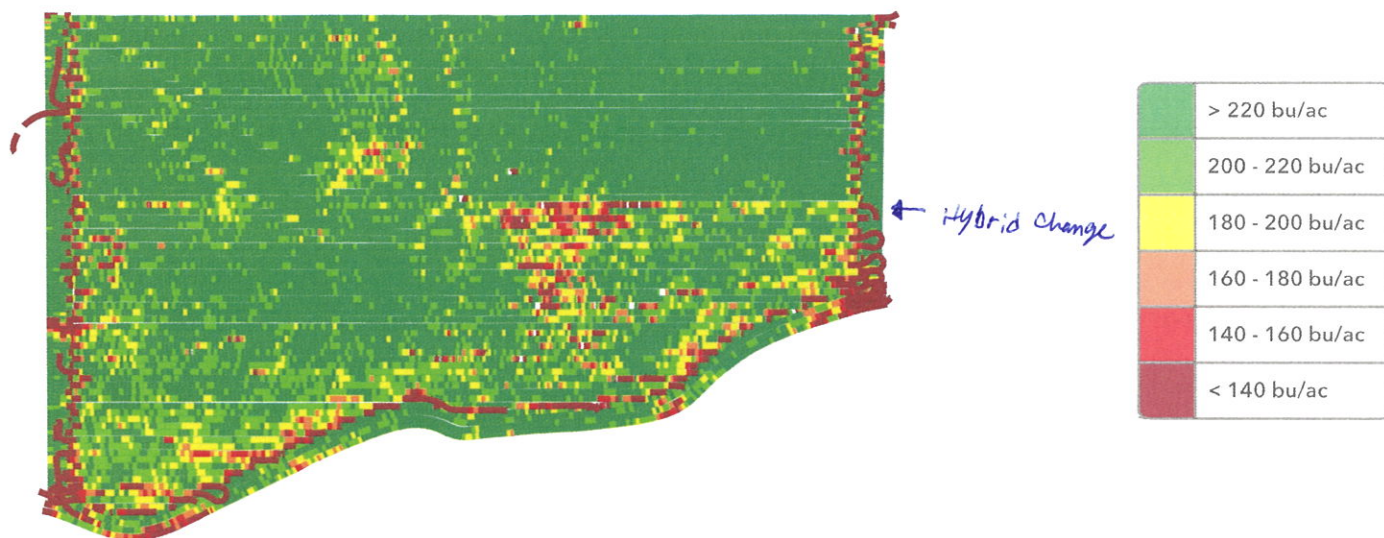
**985**  
DRY BUSHELS

**59,104**  
WET WEIGHT (LBS)

## North buffer

Kevin | Taylor

Corn - Harvested 10/15/15 - 11/1/15



HYBRID	AVG YIELD (BU/AC)	MOISTURE	HARVESTED ACRES
Missing Hybrid / Variety	226	18.1%	41.6
<b>Total/Avg</b>	<b>226</b>	<b>18.1%</b>	<b>41.6</b>

COMBINE	OPERATOR	WET WEIGHT (LBS)	MOISTURE	ACRES
Gleaner R62 (1995+) (8000001)	--	542,354	18.1%	41.6
<b>Total/Avg</b>		<b>542,354</b>	<b>18.1%</b>	<b>41.6</b>

41.6

HARVESTED ACRES

226

AVG YIELD (BU/AC)

18.1%

MOISTURE

9,382

DRY BUSHELS

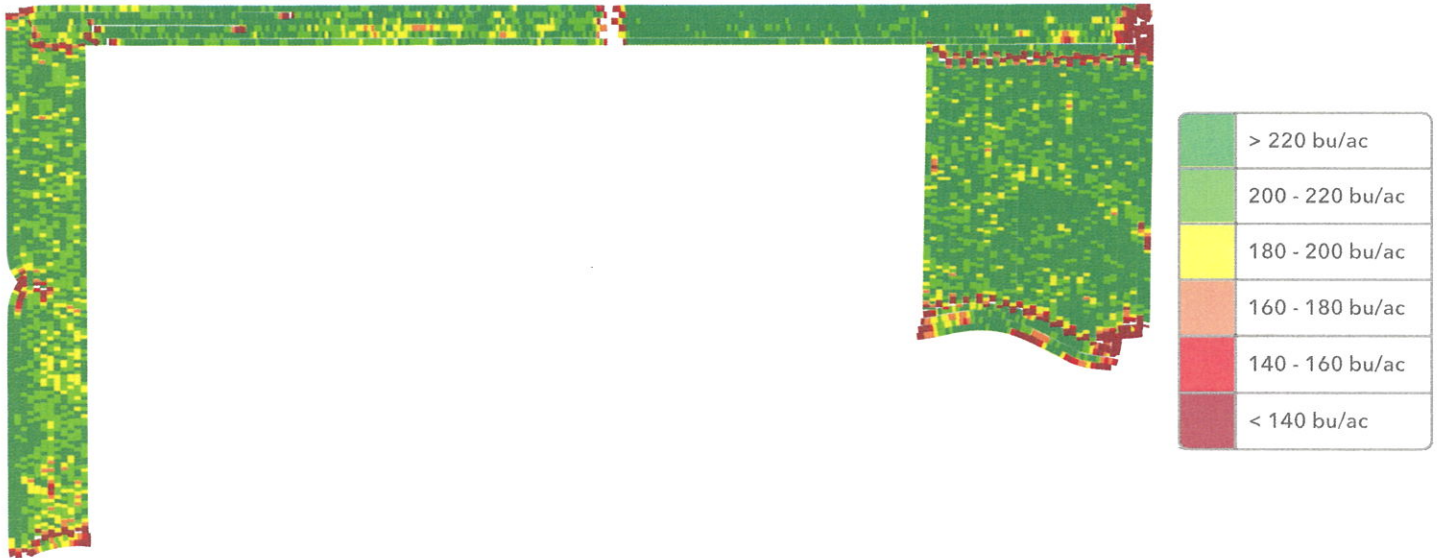
542,354

WET WEIGHT (LBS)

## North buffer

Kevin | Taylor

Corn - Harvested 10/22/16 - 10/24/16



HYBRID	AVG YIELD (BU/AC)	MOISTURE	HARVESTED ACRES
G07F23-3111	219	16.3%	17.9
<b>Total/Avg</b>	<b>219</b>	<b>16.3%</b>	<b>18</b>

COMBINE	OPERATOR	WET WEIGHT (LBS)	MOISTURE	ACRES
Gleaner R62 (1995+) (8000001)	--	223,149	16.3%	18
<b>Total/Avg</b>		<b>223,149</b>	<b>16.3%</b>	<b>18</b>

**18**

HARVESTED ACRES

**219**

AVG YIELD (BU/AC)

**16.3%**

MOISTURE

**3,948**

DRY BUSHELS

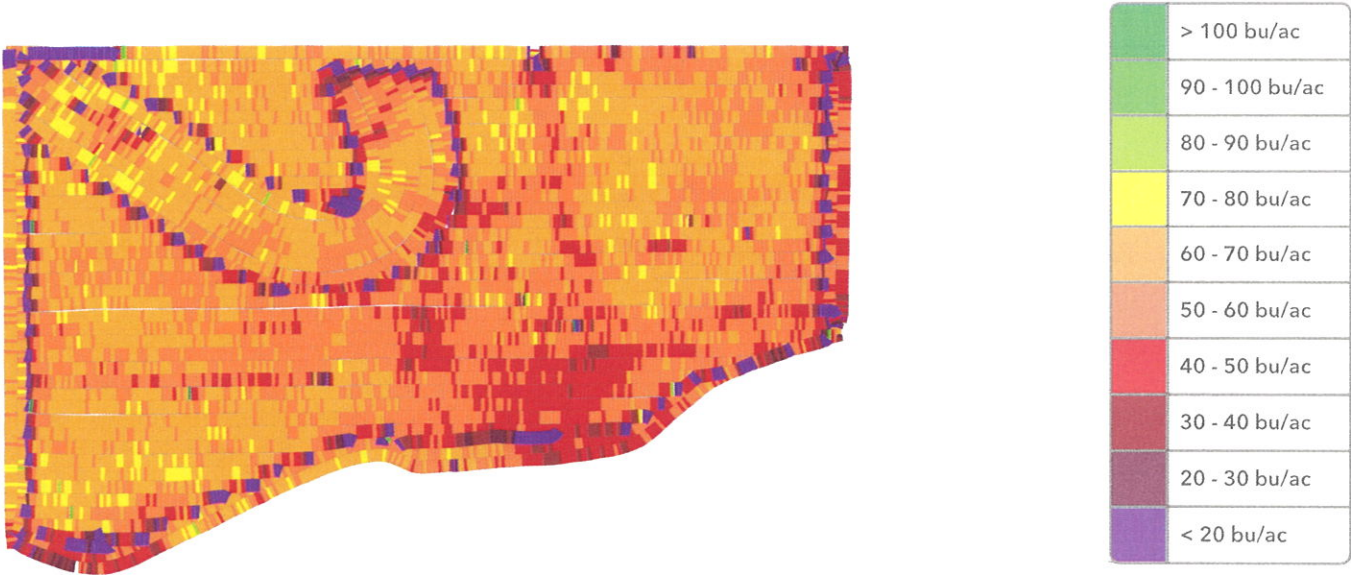
**223,149**

WET WEIGHT (LBS)

North buffer

Kevin | Taylor

Soybeans - Harvested 10/7/16 - 10/10/16



VARIETY	AVG YIELD (BU/AC)	MOISTURE	HARVESTED ACRES
AG2733	57.3	13.2%	43.1
Total/Avg	57.3	13.2%	43.1

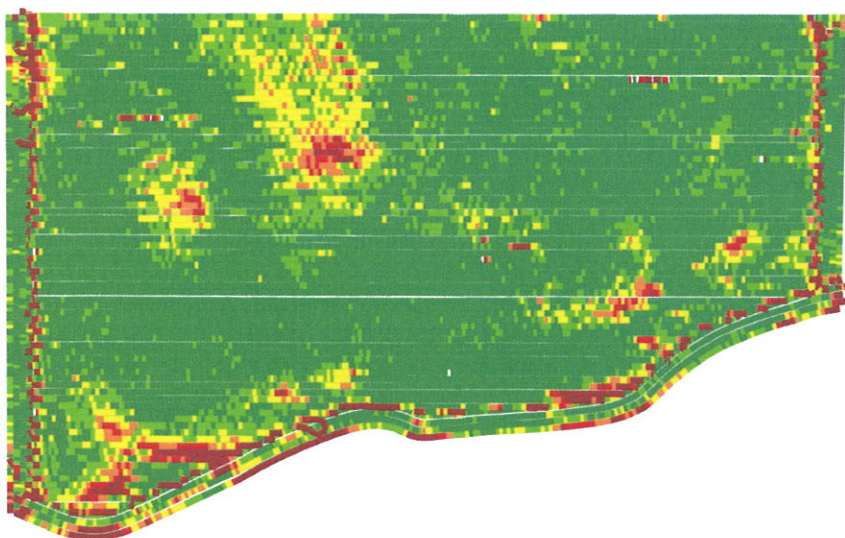
COMBINE	OPERATOR	WET WEIGHT (LBS)	MOISTURE	ACRES
Gleaner R62 (1995+) (8000001)	--	148,542	13.2%	43.1
Total/Avg		148,542	13.2%	43.1



## North buffer

Kevin | Taylor

Corn - Harvested 10/25/17 - 11/10/17



	> 220 bu/ac
	200 - 220 bu/ac
	180 - 200 bu/ac
	160 - 180 bu/ac
	140 - 160 bu/ac
	< 140 bu/ac

HYBRID	AVG YIELD (BU/AC)	MOISTURE	HARVESTED ACRES
5944VT2RIB	234	19.2%	15.1
G07F23-3111	224	19.2%	26
Missing Hybrid / Variety	214	17.8%	0.3
<b>Total/Avg</b>	<b>228</b>	<b>19.2%</b>	<b>41.3</b>

COMBINE	OPERATOR	WET WEIGHT (LBS)	MOISTURE	ACRES
Gleaner R62 (1995+) (8000001)	--	551,070	19.2%	41.3
<b>Total/Avg</b>		<b>551,070</b>	<b>19.2%</b>	<b>41.3</b>

**41.3**  
HARVESTED ACRES

**228**  
AVG YIELD (BU/AC)

**19.2%**  
MOISTURE

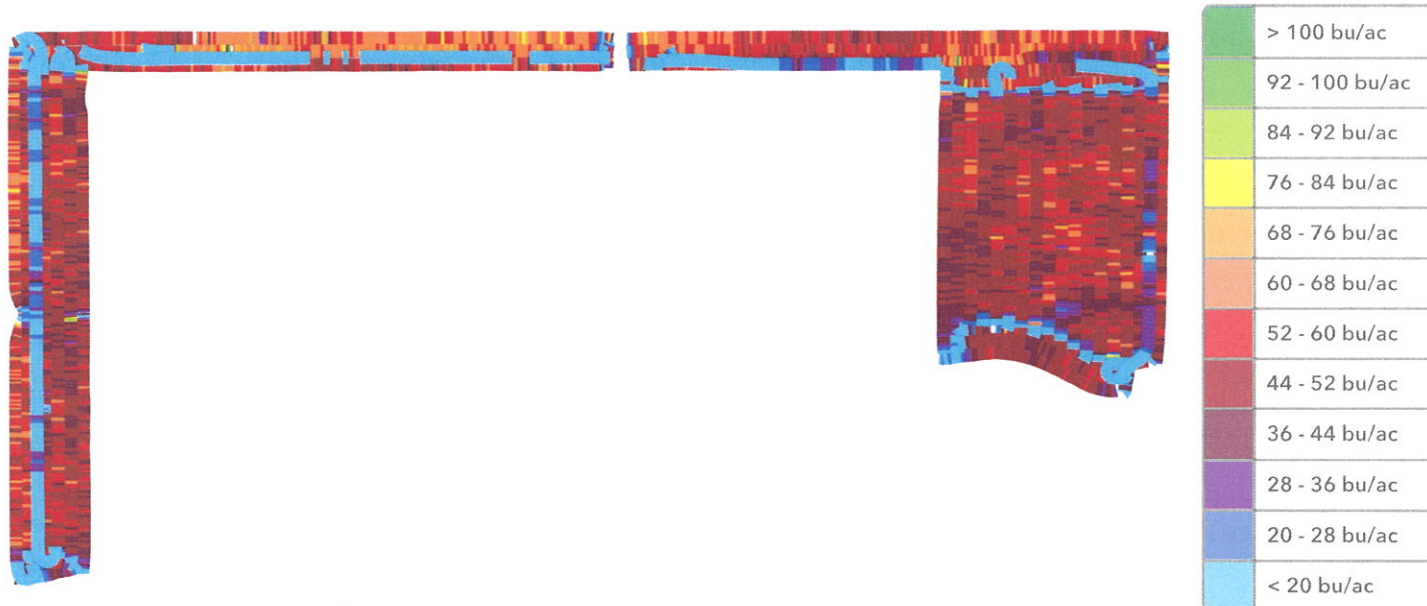
**9,409**  
DRY BUSHELS

**551,070**  
WET WEIGHT (LBS)

## North buffer

Kevin | Taylor

Soybeans - Harvested Oct 3, 2017



VARIETY	AVG YIELD (BU/AC)	MOISTURE	HARVESTED ACRES
AG2733	48.6	11.1%	18.6
<b>Total/Avg</b>	<b>48.6</b>	<b>11.1%</b>	<b>18.6</b>

COMBINE	OPERATOR	WET WEIGHT (LBS)	MOISTURE	ACRES
Gleaner R62 (1995+) (8000001)	--	54,280	11.1%	18.6
<b>Total/Avg</b>		<b>54,280</b>	<b>11.1%</b>	<b>18.6</b>

**18.6**  
HARVESTED ACRES

**48.6**  
AVG YIELD (BU/AC)

**11.1%**  
MOISTURE

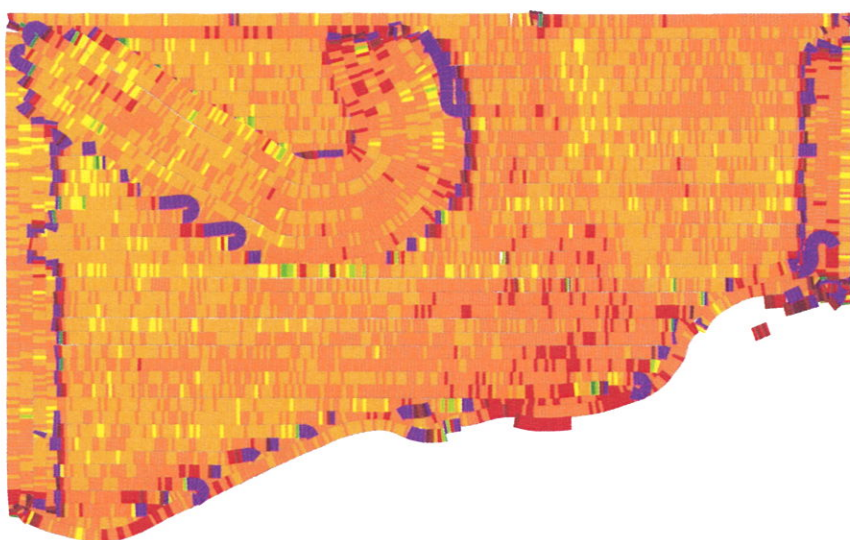
**905**  
DRY BUSHELS

**54,280**  
WET WEIGHT (LBS)

## North buffer

Kevin | Taylor

Soybeans - Harvested 10/23/18 - 10/29/18



	> 100 bu/ac
	90 - 100 bu/ac
	80 - 90 bu/ac
	70 - 80 bu/ac
	60 - 70 bu/ac
	50 - 60 bu/ac
	40 - 50 bu/ac
	30 - 40 bu/ac
	20 - 30 bu/ac
	< 20 bu/ac

VARIETY	AVG YIELD (BU/AC)	MOISTURE	HARVESTED ACRES
● AG25X9	58.8	12.4%	41
<b>Total/Avg</b>	<b>58.8</b>	<b>12.4%</b>	<b>41.1</b>

COMBINE	OPERATOR	WET WEIGHT (LBS)	MOISTURE	ACRES
● Gleaner R62 (1995+) (8000001)	--	145,021	12.4%	41.1
<b>Total/Avg</b>		<b>145,021</b>	<b>12.4%</b>	<b>41.1</b>

**41.1**

HARVESTED ACRES

**58.8**

AVG YIELD (BU/AC)

**12.4%**

MOISTURE

**2,417**

DRY BUSHELS

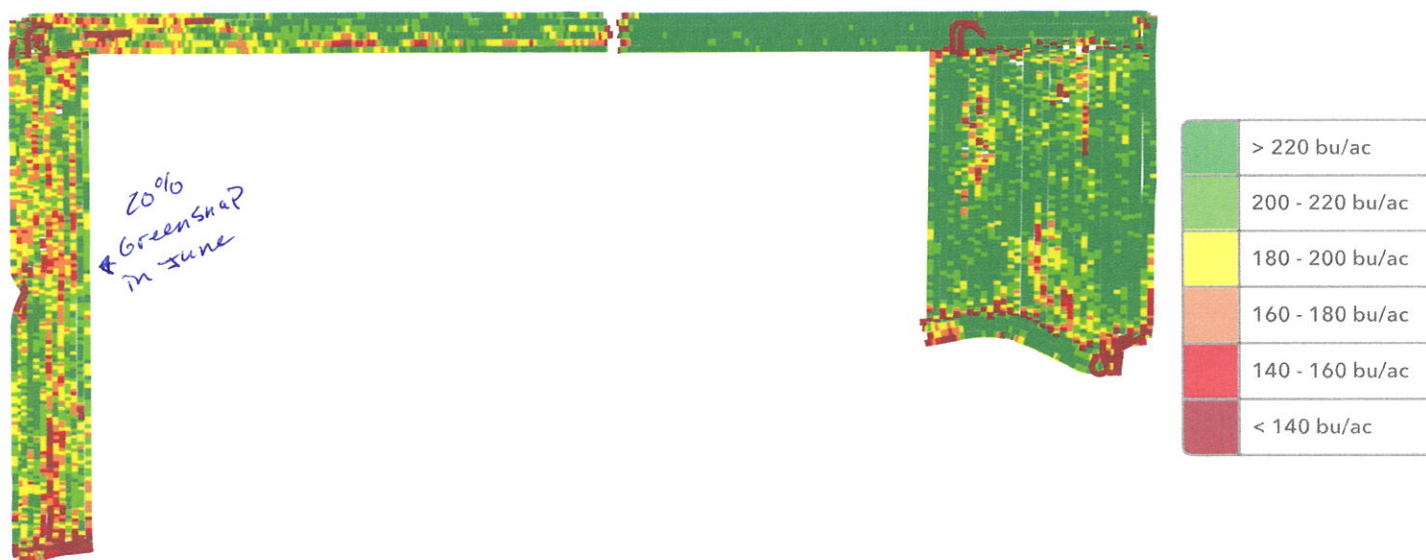
**145,021**

WET WEIGHT (LBS)

## North buffer

Kevin | Taylor

Corn - Harvested 10/30/18 - 11/1/18



HYBRID	AVG YIELD (BU/AC)	MOISTURE	HARVESTED ACRES
G07F23-3111	233	16.0%	4.8
G06Z97-3120 E-Z Refuge <i>20% GreenSnap</i>	210	17.1%	13.5
<b>Total/Avg</b>	<b>216</b>	<b>16.8%</b>	<b>18.3</b>

COMBINE	OPERATOR	WET WEIGHT (LBS)	MOISTURE	ACRES
Gleaner R62 (1995+) (8000001)	--	225,725	16.8%	18.3
<b>Total/Avg</b>		<b>225,725</b>	<b>16.8%</b>	<b>18.3</b>

**18.3**

HARVESTED ACRES

**216**

AVG YIELD (BU/AC)

**16.8%**

MOISTURE

**3,967**

DRY BUSHELS

**225,725**

WET WEIGHT (LBS)